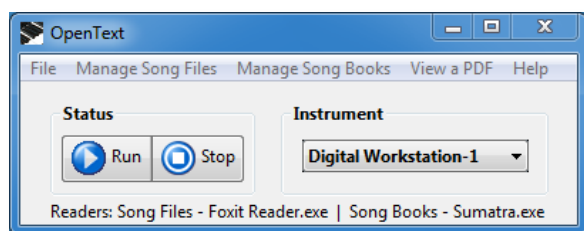


## OpenText Manual



OpenText is a program that runs in the background and triggers the PC display of a pdf text file or a page in a pdf book when a registration is selected on a PSR, CVP or Tyros.

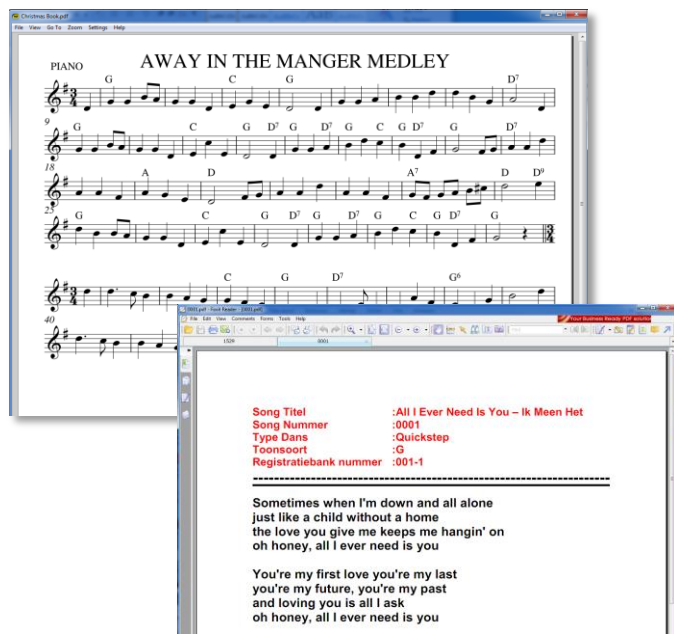
A typical use is where there is a need to display score, lyrics or other performance & song data on a PC.

### How it works

OpenText works by creating a special midi song file that, when loaded by the registration, sends a message which triggers the display of a individual pdf file or a page in a song book on the PC screen.

If you already have a midi file that you load with a registration, it will modify a version of your midi, otherwise it will create a new midi for you to use.

The program comes with a default pdf reader, Sumatra. This is used for pdf books because it is the only reader that permits a single window to display successive pages.



If you use individual pdf files, you should consider using the Foxit Reader in addition. This displays requested files as tabs in a single window, reducing the clutter of your screen. See Appendix A for download and installation details.

## Prepare needed files

### A) Make a midi setup

The PSR/Tyros needs a special midi setup in order for OpenText to capture identifying messages sent by songs loaded by a registration. To create this setup:

1) In Function/Midi/**User** tab, select AllParts setup, then Save. Select a new name (e.g. OpenTextSetup), then Ok.

If you do not have any setups in the User tab display, depress Exit to go to the Preset window, select the AllParts setup, then tab to the User area and then depress Save. Select a new name (e.g. OpenTextSetup) then Ok.

2) Depress Function/Midi/**User**/OpenTextSetup, then depress the Edit button at the bottom of the screen.

Tab to the Transmit Tab. Using the top of the Transmit Channel button, set Right 1 to Off.

Use button B to scroll down, and repeat the setting for all the other settings (Right 2 to Off, etc to Style Phrase 2 to Off) that are currently set to Midi A.

3) Use button B to scroll down to Song 1 and, with the Transmit Channel button, set Song 1 to MidiA Ch 1.

Use button B to scroll down and set all other Song settings to Off. (e.g. Song 2 to Off.... Song 16 to Off)

4) Then Exit back to the User tab, depress Save and OK.

### B) Install your pdf files

There are two types of pdf files that can be used simultaneously in OpenText:

**Song files** refer to an organization where each song (or display in response to a registration) is stored in a separate pdf file.

**Song books** refer to an organization where the item to be displayed is a page in a multi page pdf file.

Note: To view a pdf file from OpenText at any time (e.g. to look up a song page), click the [View a PDF](#) menu item.

Once you have obtained or assembled files of either type, you need to process these files in OpenText. Here's how:

#### For Song Files

Create a pdf file for each song with a filename in the following format: XXXX – SongTitle. Pdf, where XXXX is a four character song number from 0001 to 9999. For example 0001 – All I Ever Need Is You.pdf .

Save these files in a folder on the PC.

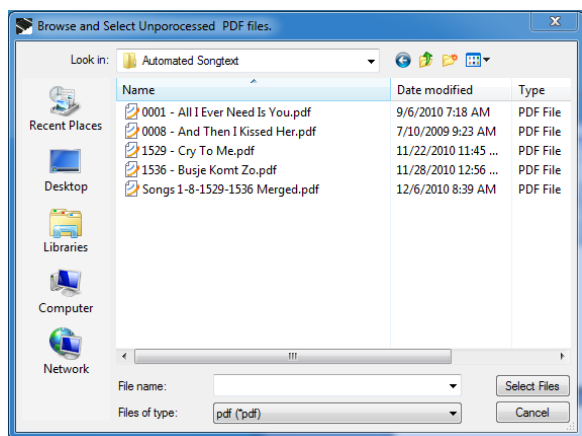
#### For Song Books

Just copy any pdf book you want to use to a folder on the PC.

## C) Create the files needed by OpenText

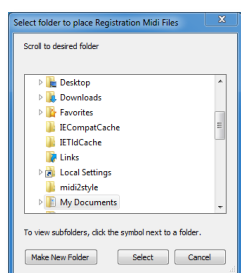
### For Song Files

To add song files so that they will be available to OpenText, depress the **Manage Song Files/Add Song Files** menu item, multi select the pdf files that you want to use and depress the **Select Files** button.

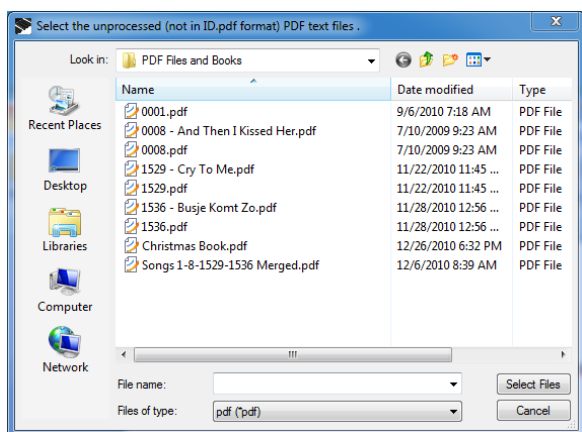


### To make Song File midis to be added to registrations:

If you are not using an existing midi 'backing' file with your registration, depress the **Manage Song Files/Create Song File Midis** menu item and then select the folder where you want the midi files to be placed.



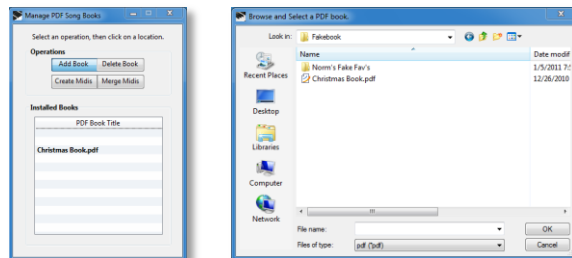
Then multi select the song files you want to process and click OK. Typically these are that files with the same names as you added to OpenText above, i.e. a four character Id number followed by a song name such as 1529 – Cry To Me.pdf.



If you already have an existing midi file you use with a song's registration(e.g. a backing midi), select the **Manage Song Files/Merge Song File Midi** menu item, select a single song file to process, then select the midi file to edit and a folder for the edited midi file.

### For Song Books

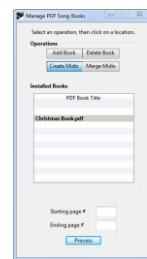
To add new books for use by OpenText, depress the **Manage Song Books** menu item and select **Add Book**. Double click on a line in the Installed Books list and browse to a book file on your PC. Repeat for all the books you plan to use.



To delete an existing book when files referencing it are no longer used, depress the **Manage Song Books** menu item and select **Delete Book**, click the book name in the Installed Books list, and click Delete in the confirmation window that appears.

### To make Song Book midis to be added to registrations:

If you are not using an existing midi 'backing' file with your registration, select the **Create Midis** button, click on an installed book, enter the page range you are interested in, select a folder for the midi files, and depress **Process**.



If you already have a midi file you use with a song's registration(e.g. backing midi), select the Merge Midi button, click on an installed book, enter the page number in the book, select the midi file to edit, a folder for the edited midi file, and then depress **Process**.

When finished with Step C, your pdf song files and song books remain in their original folders and the midi files made by creating or merging are in the folders you selected.

The midi files have the following format:

**Song file midis** either created or merged with an existing midi: a four character ID followed by the song name.

0001 - All I Ever Need Is You.mid  
0008 - And Then I Kissed Her.mid  
1529 - Cry To Me.mid  
1536 - Busje Komt Zo.mid  
Page 12 - Christmas Book.mid  
Page 13 - Christmas Book.mid  
Pg 3 - Christmas Book Green\_Onions\_(M~.mid  
Pg 4 - Christmas Book ODETTOY.mid

**Created Song Book midis:** the page number followed by the book name.

**Merged Song midis:** the page number followed by the book name and the song name. Long names are automatically abbreviated as indicated by a "~" symbol.

### D) Install the midi files on your PSR/Tyros

Created midi files are very small (<100 bytes) and they can be placed in the User Area/USB or a hard drive. Merged midis are larger and should be located on the hard drive or a USB memory that will be installed on the instrument when using OpenText. See Appendix C.

On your instrument, create a registration or edit an existing one so that the appropriate Song File midi, Created Song Book midi, or Merged Song midi is loaded with the registration. See Appendix D.



## Using OpenText to display pdfs

- In Function/Midi on the instrument, depress the midi preset made in A) above. Later, to return to the normal default midi setup, select Function/Midi/**Preset/AllParts**.
- Click the Instrument pop up box on the Open Text window to select your **Midi Device**, e.g. Digital Workstation-1 .
- Click the **Start** push button to enable displaying pdf files when a registration is loaded. To disable the pdf displays depress **Stop** or exit the program.
- To initiate a pdf display from your instrument, select a registration that references a processed midi.

It is the process of loading the registration (that is, selecting a number button that is different than the one that is lit) that causes the midi file to load. If the button is already lit, select another registration and then the first one again, or depress the Song Play button.

## Changing the pdf display

Sumatra and Foxit both have flexible display options and allow full screen views, facing page, rotated page etc. Select the ones that you prefer.

Typical settings in Sumatra are View/Single Page, Zoom/Fit Page. The settings are remembered between sessions.

For dynamic control of the pdf display (e.g. page down), consider a page turning foot pedal. There are several available for ~ \$50. Google (e.g. PC foot pedal pdf page ), or check for recommendations on the PSR forums/ newsgroups.

## Installing Edited Files

If you ever edit your song files you will need to reinstall them by clicking the **Manage Song Files/Add Song Files** menu item, selecting the edited files and depressing the **Select Files** button. Then execute **Manage Song Files/Process Song Files**.

If you edit a Song Book, you will need to reinstall it by clicking the **Manage Song Books** menu item and select **Add Book**. Then double click on the line listing your book and browse to the edited book file on your PC and click OK.

## Appendix

### A. Installing the Foxit Reader

Get Foxit at: <http://www.foxitsoftware.com/pdf/reader/> and install it on the PC.

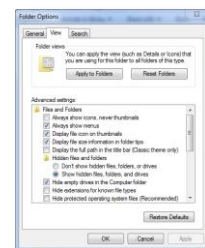
Then click the **Manage Song Files/Select Reader For Song Files** menu item. Browse to its location and select it as a reader. To unselect a previous selection depress the **Use Default** button on the selection window. Note: your selection will be remembered when you exit OpenText. The current reader selections are displayed at the bottom of the OpenText window.

### B. Location of processed pdf files

OpenText saves copies for its use to the following folders.

Win7:" C:\Users\<your username>\AppData\ Roaming\ Michael P. Bedesem\ OpenText\PDF Files and Books

XP:" C:\Users\<your username>\ApplicationData\ Michael P. Bedesem\ OpenText\ PDF Files and Books".



If these files are if hidden, in Windows Explorer/ Tools/Folder Options/View Tab, check the Hidden Files and Folders item

## C. How to transfer midis to your storage device

Use Start/All Programs/Accessories/ Windows Explorer and browse to the folder where you placed the song file or song book midis.

Make sure your USB drive is attached to your PC and then select the ones you want to install, right click the selection and, while holding down the right button, drag the selection to the USB device on the left side of the screen. Release the right button and choose Copy here.

To transfer the midis to an instrument's hard drive, attach the USB to the instrument, depress the button next to the song name on the instrument screen, tab to USB, depress Copy and then ALL, tab to the hard drive, open the folder you want to use and depress Paste.

## D. How to add a midi to a registration

Use the button next to the name of the registration on the screen and the Tab button to locate the registration you want to edit or create (typically using a bank registration bank). Select the registration. Depress Memory and make sure the song button is checked. Then depress Memory and hold it while depressing one of the 8 numbered registration buttons.

To save the registration bank, depress the button next to the registration name and then Save, select a file name if needed, and then OK.

## Trouble Shooting

### Installing

If you encounter problems while installing/operating under Vista or Window 7:

Install the program as an administrator by right-clicking the installer file and select "Run as Administrator". Answer "yes" to the warning message.

If already installed, use Windows Explorer, navigate to the folder containing the program and mark OpenText.exe file to run as an administrator by right clicking the program and select Properties. Under the compatibility tab, select Run This Program as an Administrator. Click Apply and OK.

**Error message:** "Could not open logfile C:\WINDOWS\ST6UNST.000".

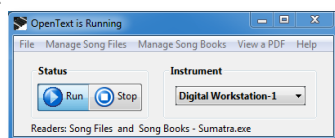
Try deleting the file ST6UNST.EXE in the directory C:\WINDOWS .

### All chords display with a /C (e.g. Am/C)

The selected midi setup is not based upon the AllParts preset.

### Reasons why a PDF file not displayed

- A Pdf song file name format is not followed. It must be four characters of numeric digits and be padded with leading "0's". E.g.. 0001 – All I Ever Need Is You.pdf
- A registration midi not installed in the registration. Confirm by viewing the instrument screen.
- The Open Text Setup is not selected in Function/Midi/**User**.
- Your instrument is not selected in the Instrument box.
- Open Text is not running (see button color and window title).
- The pdf song files or song books are not located in the proper folder. See the Appendix B..



## User's Agreement

By installing this software, the user signifies agreement with the following:

The author, Michael P. Bedesem, copyrights this software with all rights reserved. The author retains all title and intellectual property rights.

No warranty is made regarding the suitability of this software for any application, that operation will be uninterrupted, or error free. The author is not responsible for problems that result from installing or operating this software, and shall in no case be liable for special, incidental, consequential, indirect or similar damages arising howsoever.

The user agrees not to make changes or modifications to the software and not to decompile, disassemble, or otherwise reverse engineer the software.

The software is provided free for private, non-commercial use. The user agrees not to sell this software or bundle it with other software for commercial enterprise, without the express written consent of the author.

The software may be distributed to other users as provided above as long as all components, including this agreement, are included.

The user is responsible for using this software legally and in accordance with any copyrights that may pertain to third party style files.

This agreement constitutes the entire agreement between the author and the user, and may be modified only by written agreement between the parties.

## Communication & Support

Any questions, comments, suggestions for modifications or improvements, or problem reports would be most welcome. Please forward these to the author at [mpb@sover.net](mailto:mpb@sover.net) or via the [Help/Email the Author](#) menu item.

To check for updates, click the [Help/Program Updates](#) menu item.

## Acknowledgements

OpenText is one of several programs in the StyleManager Series that is intended to give users the ability to work around common annoyances, overcome operating discrepancies between instruments, or facilitate the management of PSR files.

OpenText was developed at the request of Piet ([p.c.tabbernee@online.nl](mailto:p.c.tabbernee@online.nl)) who has done the beta testing of the song file format and has made substantial contributions to the menu and in assisting other users. He recommends A-PDF programs for splitting fake books (<http://www.a-pdf.com/split/index.htm>).

Tom Scheiderer <[tscheiderer@hotmail.com](mailto:tscheiderer@hotmail.com)> gave me the encouragement to investigate the Song Book format and made good suggestions during the beta testing. He reports using Cute Pdf Professional to make his song books.

Ron's <[rongm0ntl@googlemail.com](mailto:rongm0ntl@googlemail.com)> testing of the beta version of OpenText resulted in several improvements to the user's manual. Thank you Ron.

The author gratefully acknowledges utilization of HP Midifile, a Dynamic Link Library (dll) that provides functions to read, write, edit and play type 1 & 0 midi files. This powerful XP-friendly library has been freely made available for non commercial use by its developer Heiko Plate at <http://www.heikoplate.de/hpm/>.

OpenText makes use of the Sumatra pdf reader, a very capable open source program. See: <http://blog.kowalczyk.info/software/sumtrapdf/free-pdf-reader.html>

Sumatra's web site also references Smart PDF Converter.(I have not tried this program.) See: <http://www.pdfdocconverterpro.com/?gclid=CLXBrMKt26YCFUdN4AodthH32A>

Michael P. Bedesem  
v1.4.7 5/12/16